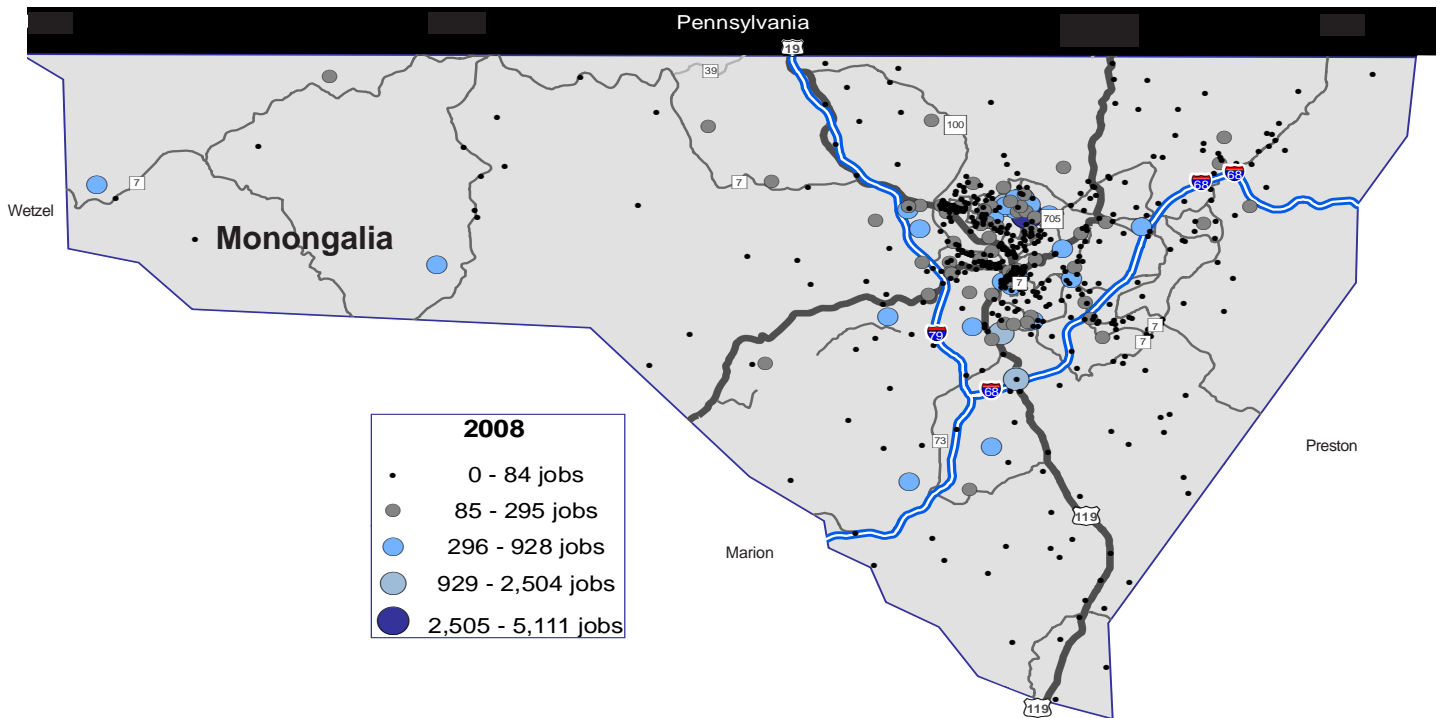


# West Virginia Economic Summary

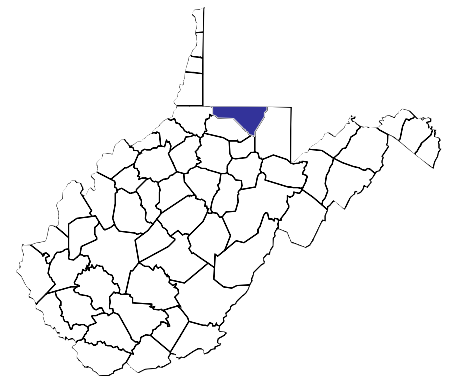
A REVIEW OF ECONOMIC ACTIVITY  
IN  
NOVEMBER 2009

## On The Map

Local Employment Dynamics



The latest version of **On the Map** (*Version 4*) from the US Bureau of the Census contains data for all states for the years 2007 and 2008. Also added is data for the state of Ohio, bringing the number of states covered by *On the Map* to 47. Version 4 contains new features, including geography import tools, export/output tools, better graphics, and new layers which include airports, universities/colleges, primary/secondary schools, Amtrak stations, and greenspaces. Version 4 also boasts an expanded search functionality. The above map, created via Version 4, simply details where the bulk of jobs are found within Monongalia County and clearly, the bulk of employment is found in and around Morgantown.



This type of resource was unavailable to policy makers, businesses, economic developers, and researchers a decade ago. Now, however, the ability to make informed decisions with greater precision has become much simpler and much speedier.

# Local Area Employment Dynamics

## Quarterly Information 2008

The following table contains the latest quarterly information on the labor markets for the state's Workforce Investment Areas. This data was developed through the Local Employment Dynamics (LED) program, a voluntary partnership between state labor market information agencies and the U.S. Census Bureau utilizing information from the Quarterly Census of Employment and Wages program and employee wage data from the state's unemployment insurance system combined with employee demographic data from the Census Bureau. LED data are also available for counties and metropolitan statistical areas and can be accessed through [www.workforcewv.org/lmi](http://www.workforcewv.org/lmi) by clicking on Quarterly Workforce Indicators.

The list of definitions on page 3 provides further insight into the uses of LED data .

Year.Qtr		Workforce Investment Area						
		Area 1	Area 2	Area 3	Area 4	Area 5	Area 6	Area 7
2008.1	Avg Monthly Earnings	\$2,742	\$3,270	\$3,439	\$2,830	\$2,876	\$2,939	\$2,664
	Avg New Hire Earnings	\$1,793	\$1,902	\$1,874	\$1,693	\$1,775	\$1,655	\$1,638
	Job Creation	5,658	5,241	4,285	2,762	2,527	5,782	3,322
	Net Job Flows	987	654	-166	194	34	405	179
	New Hires	16,911	18,150	15,705	9,262	8,243	19,501	9,125
	Separations	18,602	20,249	18,203	10,479	9,530	22,464	10,285
	Total Employment	105,387	110,752	115,967	65,973	66,949	146,822	66,020
	Turnover	8.6%	8.8%	7.9%	8.3%	7.8%	7.9%	8.5%
2008.2	Avg Monthly Earnings	\$2,922	\$3,430	\$3,442	\$2,970	\$2,968	\$3,007	\$2,866
	Avg New Hire Earnings	\$2,151	\$2,411	\$2,361	\$2,145	\$1,910	\$1,997	\$1,925
	Job Creation	8,565	6,870	6,733	3,796	3,998	9,504	4,322
	Net Job Flows	3,185	1,887	2,769	282	1,416	3,133	767
	New Hires	21,844	22,692	20,024	12,201	10,746	26,495	11,155
	Separations	23,080	24,114	20,821	14,379	11,501	28,795	12,967
	Total Employment	107,600	112,734	116,755	67,266	68,186	149,811	66,789
	Turnover	9.6%	9.5%	8.1%	9.4%	7.7%	8.6%	9.2%
2008.3	Avg Monthly Earnings	\$2,770	\$3,248	\$3,391	\$2,743	\$2,915	\$2,893	\$2,540
	Avg New Hire Earnings	\$2,077	\$2,448	\$2,146	\$1,968	\$1,760	\$1,968	\$1,765
	Job Creation	5,166	6,261	4,265	2,773	2,798	6,986	3,576
	Net Job Flows	304	1,215	-721	-225	-381	-331	126
	New Hires	20,949	23,884	19,596	11,635	10,624	27,470	11,026
	Separations	23,241	25,159	22,337	13,138	13,026	31,206	12,487
	Total Employment	108,761	113,246	118,656	66,386	68,675	151,559	66,354
	Turnover	9.8%	9.5%	8.3%	8.8%	7.9%	8.9%	8.9%
2008.4	Avg Monthly Earnings	\$3,105	\$3,643	\$3,592	\$3,074	\$3,141	\$3,142	\$2,902
	Avg New Hire Earnings	\$2,235	\$2,635	\$2,301	\$2,087	\$1,853	\$2,014	\$2,131
	Job Creation	6,470	5,130	4,806	3,200	2,899	6,468	3,330
	Net Job Flows	-1,417	-1,877	-273	-327	-270	-1,093	-1,625
	New Hires	18,475	21,139	17,776	10,282	9,483	22,964	8,992
	Separations	23,969	25,960	20,764	13,105	11,560	27,928	12,772
	Total Employment	109,509	115,536	118,244	66,794	68,628	152,009	66,787
	Turnover	10.6%	10.0%	8.3%	9.0%	7.8%	9.0%	9.5%

Topic	Answers the question	
<b>Average monthly earnings:</b>	Total quarterly earnings of all full-quarter employees divided by the number of full-quarter employees, divided by 3.	What are the average earnings of core employees?
<b>Average new hire earnings:</b>	Total quarterly earnings of all full-quarter new hires divided by the number of full-quarter new hires, divided by 3.	What are new hires earning?
<b>Job creation:</b>	The number of new jobs that are created by either new area businesses or the expansion of employment by existing firms.	What industries are creating the most jobs?
<b>Net job flows:</b>	Difference between current and previous employment at each business.	Which industries are expanding employment? Which industries are contracting employment?
<b>New hires:</b>	Total number of accessions that were also not employed by that employer during the previous four quarters.	Same as accessions, but focus on new hires.
<b>Separations:</b>	Total number of workers who were employed by a business in the current quarter, but not in the subsequent quarter.	What workers are leaving jobs? What industries are workers leaving?
<b>Total employment:</b>	Total number of workers who were employed by the same employer in both the current and previous quarter.	Who is filling what jobs? What industries are biggest employers? What industries employ the largest numbers of particular types of workers?
<b>Turnover:</b>	Turnover rate = $(1/2) * (\text{accessions} + \text{separations}) / \text{employment}$ (All full-quarter measures)	What is the turnover rate in the workforce? What proportion of workers are new?

## AT A GLANCE

### Payroll Employment

Total nonfarm payroll employment rose 1,300 over the month of November 2009 to a level of 748,300. The goods-producing sector slipped 400, with losses of 800 in construction and 200 in mining and logging overpowering a gain of 600 in manufacturing. The service-providing sector climbed 1,700, fueled by a seasonal increase of 1,400 in trade, transportation, and utilities. Other gains included 600 in professional and business services, 400 in government, 200 in educational and health services, and 200 in financial activities. Employment declines included 800 in leisure and hospitality and 300 in other services, while information employment was unchanged over the month.

Since November 2008, the number of payroll jobs in West Virginia has declined 17,500, with losses of 11,800 in the goods-producing sector and 5,700 in the service-providing sector. Employment declines included 6,500 in trade, transportation, and utilities, 4,800 in manufacturing, 4,700 in mining and logging, 2,300 in construction, 1,300 in leisure and hospitality, 700 in financial activities, 600 in other services, and 600 in information. Employment gains included 1,900 in professional and business services, 1,400 in educational and health services, and 700 in government.

### Unemployment

The number of unemployed state residents rose 1,800 to 62,800 in November 2009. The corresponding unemployment rate climbed two-tenths of a percentage point to 7.9 percent of the civilian labor force. Total unemployment has risen 30,600 since November 2008, when the rate was 4.0 percent and 32,200 were jobless. The state's seasonally adjusted unemployment rate inched downward one-tenth of a percentage point to 8.4 percent in November, while the national rate declined two-tenths of a percentage point to 10.0 percent.

### Hours and Earnings

Earnings for private sector production and nonsupervisory workers averaged \$15.93 in November, up six cents from the previous month. Hourly earnings were up 32 cents over the year. Average weekly earnings increased by \$3.67 to \$552.77, and were up \$12.66 from the previous November. Average weekly hours were up slightly over the month as well as over the year.

## AVERAGE HOURS AND EARNINGS

	Avg. Weekly Earnings			Avg. Weekly Hours			Avg. Hourly Earnings		
	Nov 2009	Oct 2009	Nov 2008	Nov 2009	Oct 2009	Nov 2008	Nov 2009	Oct 2009	Nov 2008
<b>PRIVATE SECTOR</b>	<b>\$552.77</b>	<b>\$549.10</b>	<b>\$540.11</b>	<b>34.7</b>	<b>34.6</b>	<b>34.6</b>	<b>\$15.93</b>	<b>\$15.87</b>	<b>\$15.61</b>
<b>Goods Producing</b>	<b>892.11</b>	<b>881.58</b>	<b>868.52</b>	<b>42.2</b>	<b>42.0</b>	<b>42.1</b>	<b>21.14</b>	<b>20.99</b>	<b>20.63</b>
Mining and Logging	1,168.83	1,121.45	1,051.83	48.1	47.1	46.5	24.30	23.81	22.62
Construction	911.15	903.04	807.43	41.7	41.5	38.8	21.85	21.76	20.81
Manufacturing	721.94	729.83	805.56	39.3	39.6	42.0	18.37	18.43	19.18
Durable Goods	671.03	679.60	775.32	39.8	40.0	42.0	16.86	16.99	18.46
Nondurable Goods	812.31	816.27	853.56	38.7	39.0	41.8	20.99	20.93	20.42
<b>Private Service-Providing</b>	<b>476.19</b>	<b>473.10</b>	<b>456.49</b>	<b>33.0</b>	<b>32.9</b>	<b>32.7</b>	<b>14.43</b>	<b>14.38</b>	<b>13.96</b>
Trade, Transportation, & Utilities	474.55	469.45	482.50	35.1	34.8	35.9	13.52	13.49	13.44
Wholesale Trade	716.77	691.65	706.86	40.2	39.5	40.3	17.83	17.51	17.54
Retail Trade	344.30	342.26	355.12	31.3	31.2	32.7	11.00	10.97	10.86
Financial Activities	480.25	480.94	443.46	34.7	34.7	33.8	13.84	13.86	13.12
Finance & Insurance	512.27	511.20	466.90	35.5	35.5	35.0	14.43	14.40	13.34
Real Estate & Rental & Leasing	386.19	385.43	373.57	32.7	32.2	30.2	11.81	11.97	12.37
Professional & Business Services	629.82	618.83	572.95	37.4	37.1	35.0	16.84	16.68	16.37
Health Care									
Health Care & Social Assistance	559.44	553.44	536.80	33.6	33.4	33.3	16.65	16.57	16.12
Leisure & Hospitality									
Accommodation & Food Service	224.66	226.05	215.45	26.4	26.5	26.5	8.51	8.53	8.13

# LABOR FORCE AND NONFARM PAYROLL EMPLOYMENT

	<i>Prelim.</i> Nov 2009	<i>Revised</i> Oct 2009	<i>Revised</i> Nov 2008	<i>Change From:</i> Oct 2009    Nov 2008	
<b>LABOR FORCE STATISTICS</b>					
Civilian Labor Force	789.9	789.5	799.0	0.4	-9.1
Total Employment	727.1	728.5	766.8	-1.4	-39.7
Total Unemployment	62.8	61.0	32.2	1.8	30.6
Unemployment Rate	7.9	7.7	4.0	xx	xx
<b>NONFARM PAYROLL EMPLOYMENT BY INDUSTRY</b>					
<b>TOTAL NONFARM PAYROLL EMPLOYMENT</b>	<b>748.3</b>	<b>747.0</b>	<b>765.8</b>	<b>1.3</b>	<b>-17.5</b>
<b>PRIVATE SECTOR</b>	<b>597.6</b>	<b>596.7</b>	<b>615.8</b>	<b>0.9</b>	<b>-18.2</b>
<b>GOODS-PRODUCING</b>	<b>114.3</b>	<b>114.7</b>	<b>126.1</b>	<b>-0.4</b>	<b>-11.8</b>
<b>Mining and Logging</b>	<b>27.3</b>	<b>27.5</b>	<b>32.0</b>	<b>-0.2</b>	<b>-4.7</b>
<b>Construction</b>	<b>36.7</b>	<b>37.5</b>	<b>39.0</b>	<b>-0.8</b>	<b>-2.3</b>
<b>Manufacturing</b>	<b>50.3</b>	<b>49.7</b>	<b>55.1</b>	<b>0.6</b>	<b>-4.8</b>
Durable Goods	30.6	30.3	34.1	0.3	-3.5
Nondurable Goods	19.7	19.4	21.0	0.3	-1.3
<b>SERVICE-PROVIDING</b>	<b>634.0</b>	<b>632.3</b>	<b>639.7</b>	<b>1.7</b>	<b>-5.7</b>
<b>Private Service-Providing</b>	<b>483.3</b>	<b>482.0</b>	<b>489.7</b>	<b>1.3</b>	<b>-6.4</b>
<b>Trade, Transportation, and Utilities</b>	<b>136.4</b>	<b>135.0</b>	<b>142.9</b>	<b>1.4</b>	<b>-6.5</b>
Wholesale Trade	23.4	23.7	25.1	-0.3	-1.7
Retail Trade	86.8	85.2	90.4	1.6	-3.6
Transportation, Warehousing, and Utilities	26.2	26.1	27.4	0.1	-1.2
<b>Information</b>	<b>10.4</b>	<b>10.4</b>	<b>11.0</b>	<b>0.0</b>	<b>-0.6</b>
<b>Financial Activities</b>	<b>28.7</b>	<b>28.5</b>	<b>29.4</b>	<b>0.2</b>	<b>-0.7</b>
Finance and Insurance	21.5	21.3	22.0	0.2	-0.5
Real Estate and Rental and Leasing	7.2	7.2	7.4	0.0	-0.2
<b>Professional and Business Services</b>	<b>62.0</b>	<b>61.4</b>	<b>60.1</b>	<b>0.6</b>	<b>1.9</b>
Professional, Scientific and Technical Service	25.1	24.8	24.7	0.3	0.4
Management of Companies and Enterprises	5.2	5.1	5.0	0.1	0.2
Administrative and Support and Waste					
Management and Remediation	31.7	31.5	30.4	0.2	1.3
<b>Educational and Health Services</b>	<b>120.7</b>	<b>120.5</b>	<b>119.3</b>	<b>0.2</b>	<b>1.4</b>
Educational Services	10.3	10.2	11.3	0.1	-1.0
Health Care and Social Assistance	110.4	110.3	108.0	0.1	2.4
<b>Leisure and Hospitality</b>	<b>70.1</b>	<b>70.9</b>	<b>71.4</b>	<b>-0.8</b>	<b>-1.3</b>
Arts, Entertainment, and Recreation	7.8	8.6	8.3	-0.8	-0.5
Accommodation and Food Service	62.3	62.3	63.1	0.0	-0.8
<b>Other Services</b>	<b>55.0</b>	<b>55.3</b>	<b>55.6</b>	<b>-0.3</b>	<b>-0.6</b>
<b>Government</b>	<b>150.7</b>	<b>150.3</b>	<b>150.0</b>	<b>0.4</b>	<b>0.7</b>
Federal Government	23.3	23.8	23.1	-0.5	0.2
State Government	49.0	48.6	48.6	0.4	0.4
Local Government	78.4	77.9	78.3	0.5	0.1
Labor-Management Dispute Status	0.0	0.0	0.0	xx	xx

March 2008 benchmark  
Data in thousands

	Nov 2008	Dec 2008	Jan 2009	Feb 2009	Mar 2009	Apr 2009	May 2009	June 2009	July 2009	Aug 2009	Sep 2009	Oct 2009	Nov 2009
--	-------------	-------------	-------------	-------------	-------------	-------------	-------------	--------------	--------------	-------------	-------------	-------------	-------------

### LABOR FORCE STATISTICS - Seasonally adjusted

Civilian Labor Force	804.3	805.5	798.5	794.1	792.7	795.0	793.4	790.3	788.7	788.0	791.6	789.6	790.9
Employment	769.8	769.6	756.8	746.5	739.1	734.0	726.4	718.8	718.8	718.1	721.4	722.3	724.1
Unemployment	34.6	35.9	41.8	47.6	53.5	61.0	67.0	71.6	69.9	69.9	70.2	67.3	66.8
Unemployment Rate	4.3	4.5	5.2	6.0	6.8	7.7	8.4	9.1	8.9	8.9	8.9	8.5	8.4

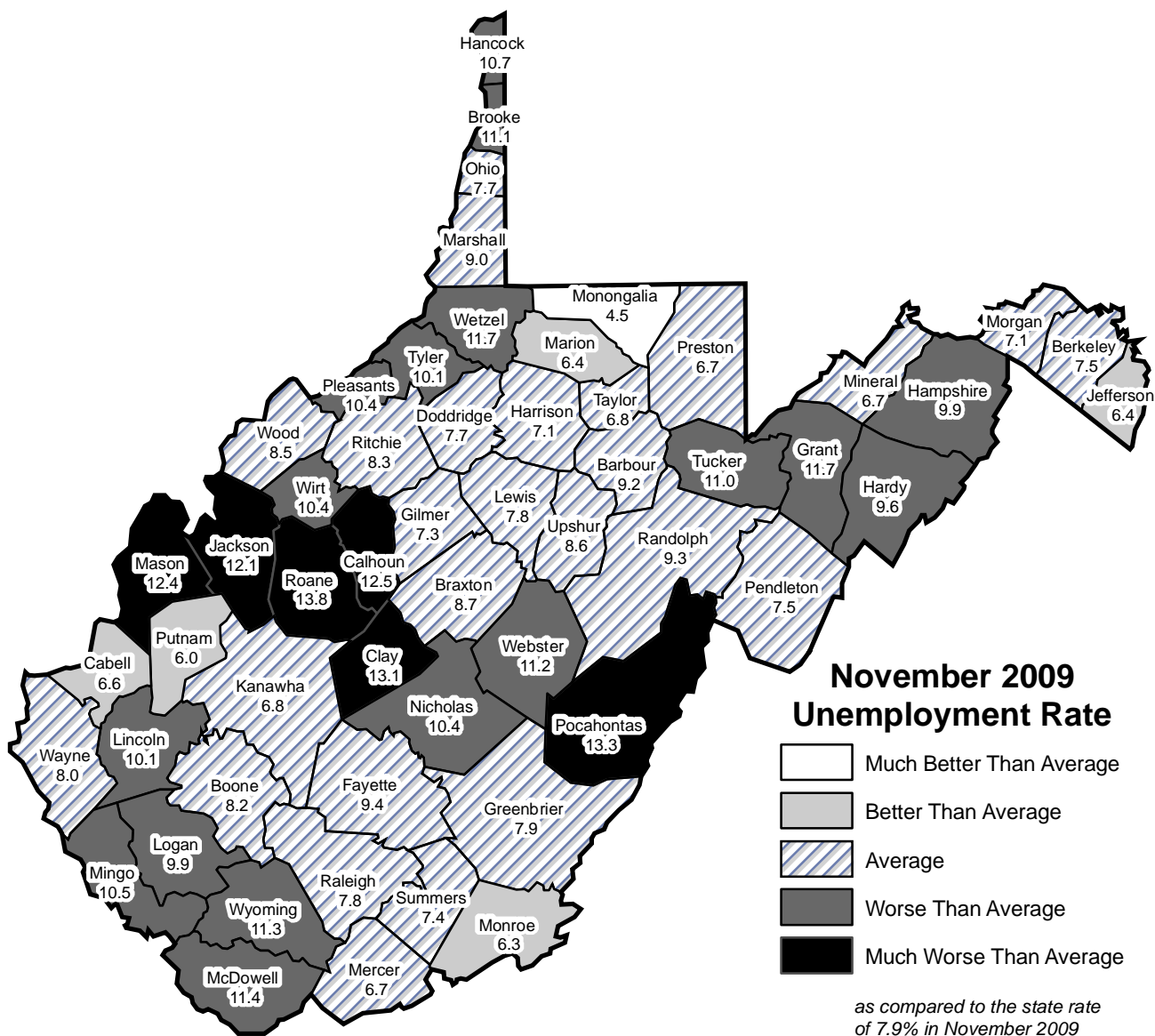
### NONFARM PAYROLL EMPLOYMENT BY INDUSTRY - Seasonally Adjusted

TOTALNONFARMPAYROLL	759.2	757.4	755.4	748.8	744.2	738.8	738.7	736.4	735.0	738.3	738.2	740.3	742.0
PRIVATESECTOR	611.7	610.2	609.1	602.5	598.1	591.9	591.7	590.3	588.7	590.7	590.8	591.8	594.0
GOODS-PRODUCING	124.9	124.6	123.9	121.9	119.4	114.9	113.8	112.3	111.2	111.8	111.4	112.2	113.1
Mining & Logging	31.8	31.9	31.8	31.6	31.1	28.8	27.7	26.9	27.1	27.3	27.6	27.3	27.1
Construction	38.0	37.9	37.8	37.0	36.0	34.4	35.3	35.0	34.5	34.6	34.3	35.3	35.7
Manufacturing	55.1	54.8	54.3	53.3	52.3	51.7	50.8	50.4	49.6	49.9	49.5	49.6	50.3
Nondurable Goods	21.0	21.0	20.9	20.2	20.1	20.2	19.4	19.4	19.2	19.2	19.1	19.4	19.7
SERVICE-PROVIDING	634.3	632.8	631.5	626.9	624.8	623.9	624.9	624.1	623.8	626.5	626.8	628.1	628.9
Private Service-Providing	486.8	485.6	485.2	480.6	478.7	477.0	477.9	478.0	477.5	478.9	479.4	479.6	480.9
Trade, Transportation, & Utilities	140.1	139.9	140.0	138.5	137.6	136.5	136.2	136.0	135.4	135.6	134.4	134.0	133.8
Wholesale Trade	25.0	25.1	24.8	24.0	23.6	23.3	23.3	23.4	23.4	23.7	23.5	23.7	23.3
Retail Trade	87.9	87.5	88.1	87.5	87.2	86.5	86.1	86.1	85.6	85.7	84.8	84.4	84.5
Transportation, Warehousing, & Utilities	27.2	27.3	27.1	27.0	26.8	26.7	26.8	26.5	26.4	26.2	26.1	25.9	26.0
Financial Activities	29.4	29.5	29.1	28.7	28.5	28.3	28.3	28.2	28.2	28.3	28.5	28.5	28.8
Real Estate & Rental & Leasing	7.4	7.5	7.4	7.3	7.1	7.0	7.2	7.2	7.1	7.1	7.3	7.2	7.2
Professional & Business Services	60.0	60.0	59.9	58.7	58.4	58.5	58.5	58.5	59.4	59.6	60.5	61.1	62.0
Professional, Scientific & Technical Services	24.8	24.8	24.5	24.0	24.0	24.0	24.5	24.1	24.4	24.6	24.4	25.0	25.2
Administrative & Support & Waste Management	30.2	30.3	30.2	29.5	29.2	29.5	28.9	29.4	29.9	30.0	31.1	31.1	31.6
Educational & Health Service	117.7	117.1	117.6	116.8	117.2	117.7	117.9	118.6	117.9	118.9	119.5	119.5	119.2
Educational Services	10.3	10.0	10.3	9.7	9.7	9.7	9.8	10.3	10.7	10.6	9.7	9.4	9.4
Health Care & Social Assistance	107.4	107.1	107.3	107.1	107.5	108.0	108.1	108.3	107.2	108.3	109.8	110.1	109.8
Leisure & Hospitality	72.9	72.5	72.2	72.0	71.5	70.5	71.3	71.0	70.6	70.6	70.5	70.8	71.6
Arts, Entertainment, & Recreation	9.3	9.1	9.1	8.9	8.7	8.5	8.5	8.3	8.3	8.4	8.4	8.6	8.8
Accommodation & Food Service	63.6	63.4	63.1	63.1	62.8	62.0	62.8	62.7	62.3	62.2	62.1	62.2	62.8
Other Services	55.7	55.7	55.7	55.3	55.0	55.0	55.2	55.3	55.5	55.4	55.5	55.3	55.1
Government	147.5	147.2	146.3	146.3	146.1	146.9	147.0	146.1	146.3	147.6	147.4	148.5	148.0
Federal Government	23.0	23.1	23.4	23.3	23.2	23.4	23.7	23.4	23.4	23.5	23.5	23.8	23.2
State Government	46.8	46.9	46.4	46.1	45.9	46.2	46.3	45.3	45.7	46.4	46.1	47.0	47.1
Local Government	77.7	77.2	76.5	76.9	77.0	77.3	77.0	77.4	77.2	77.7	77.8	77.7	77.7

### METROPOLITAN STATISTICAL AREAS NONFARM PAYROLL EMPLOYMENT Seasonally Adjusted

	Nov 2008	Dec 2008	Jan 2009	Feb 2009	Mar 2009	Apr 2009	May 2009	June 2009	July 2009	Aug 2009	Sep 2009	Oct 2009	Nov 2009
Charleston	152.8	152.1	151.9	150.9	149.6	149.4	149.7	149.1	149.1	149.8	148.8	150.0	150.5
Huntington	119.2	118.6	119.1	118.6	118.4	117.6	117.9	118.2	117.2	117.6	116.3	116.1	115.6
Morgantown	63.7	63.0	62.9	63.1	63.2	62.3	62.6	62.9	62.8	63.0	62.5	64.3	63.9
Parkersburg	72.4	72.6	72.6	72.2	72.2	71.5	71.2	72.6	72.5	72.7	72.3	71.5	71.0
Wheeling	68.2	68.2	68.4	68.1	68.0	67.5	67.8	67.7	67.6	67.8	67.7	67.5	67.6

March 2008 benchmark  
Data in thousands



West Virginia's unemployment rate climbed two-tenths of a percentage point to 7.9 percent in November 2009. The majority of counties reported increasing unemployment rates as well. The number of counties recording an unemployment rate considered much worse than average when compared to the state rate rose in November. This group included Jackson (12.1), Mason (12.4), Calhoun (12.5), Clay (13.1), Pocahontas (13.3), and Roane (13.8).

The number of counties recording an unemployment rate considered better than average when compared to the state rate declined slightly. This group contained Cabell (6.6), Jefferson (6.4), Marion (6.4), Monroe (6.3), and Putnam (6.0). Once again, Monongalia (4.5) was the sole county recording an unemployment rate considered much better than average when compared to the state rate.

# Labor Force Data by County

	Civilian Labor Force			Total Employment			Total Unemployment			Rate		
	Nov 2009	Oct 2009	Nov 2008	Nov 2009	Oct 2009	Nov 2008	Nov 2009	Oct 2009	Nov 2008	Nov 2009	Oct 2009	Nov 2008
Barbour	6,700	6,650	6,740	6,080	6,060	6,460	620	590	280	9.2	8.9	4.2
Berkeley	43,630	43,490	44,750	40,360	40,360	42,370	3,280	3,130	2,380	7.5	7.2	5.3
Boone	9,270	9,330	9,220	8,510	8,500	8,940	760	830	280	8.2	8.9	3.0
Braxton	5,760	5,810	5,820	5,250	5,310	5,560	500	490	250	8.7	8.5	4.4
Brooke	10,810	10,700	11,020	9,610	9,620	10,370	1,200	1,080	640	11.1	10.1	5.8
Cabell	43,340	43,230	44,820	40,500	40,460	43,190	2,840	2,760	1,620	6.6	6.4	3.6
Calhoun	2,850	2,790	2,710	2,490	2,460	2,550	360	330	160	12.5	11.9	5.8
Clay	3,540	3,610	3,410	3,070	3,070	3,230	460	540	180	13.1	15.0	5.3
Doddridge	2,810	2,780	2,780	2,600	2,590	2,670	220	190	110	7.7	6.7	3.8
Fayette	17,990	18,160	17,740	16,300	16,590	16,990	1,680	1,570	750	9.4	8.7	4.2
Gilmer	3,020	3,010	2,990	2,800	2,800	2,890	220	210	100	7.3	7.1	3.5
Grant	5,040	5,060	5,210	4,450	4,520	4,970	590	540	240	11.7	10.6	4.6
Greenbrier	14,700	14,880	14,700	13,540	13,730	14,030	1,160	1,150	670	7.9	7.7	4.5
Hampshire	9,200	9,100	9,190	8,290	8,300	8,790	910	800	400	9.9	8.8	4.3
Hancock	14,190	14,140	14,580	12,680	12,690	13,690	1,520	1,440	900	10.7	10.2	6.2
Hardy	6,330	6,390	6,600	5,720	5,830	6,300	610	570	290	9.6	8.9	4.5
Harrison	30,660	30,570	30,390	28,470	28,410	29,280	2,190	2,170	1,110	7.1	7.1	3.7
Jackson	11,390	11,370	11,730	10,000	10,040	11,190	1,380	1,330	540	12.1	11.7	4.6
Jefferson	24,150	24,090	24,240	22,600	22,580	23,240	1,550	1,510	1,000	6.4	6.3	4.1
Kanawha	89,580	89,510	90,650	83,470	83,420	87,730	6,120	6,090	2,920	6.8	6.8	3.2
Lewis	7,270	7,420	7,290	6,700	6,860	7,030	570	560	260	7.8	7.6	3.6
Lincoln	7,970	7,960	7,840	7,160	7,160	7,530	800	800	310	10.1	10.1	3.9
Logan	13,030	13,030	13,210	11,740	11,760	12,760	1,290	1,270	450	9.9	9.7	3.4
McDowell	7,320	7,270	7,210	6,490	6,450	6,860	840	820	350	11.4	11.2	4.8
Marion	25,730	25,790	26,090	24,070	24,130	25,270	1,660	1,660	820	6.4	6.4	3.1
Marshall	14,710	14,600	14,730	13,380	13,340	14,030	1,330	1,250	700	9.0	8.6	4.8
Mason	10,050	9,990	9,800	8,810	8,860	9,150	1,250	1,130	660	12.4	11.3	6.7
Mercer	24,780	24,710	24,840	23,130	23,110	23,950	1,650	1,600	890	6.7	6.5	3.6
Mineral	13,100	13,180	13,270	12,230	12,360	12,730	880	830	530	6.7	6.3	4.0
Mingo	8,600	8,630	9,040	7,690	7,730	8,720	910	900	320	10.5	10.4	3.6
Monongalia	48,170	48,360	48,730	46,020	46,050	47,570	2,150	2,310	1,160	4.5	4.8	2.4
Monroe	5,690	5,740	5,840	5,330	5,400	5,620	360	340	220	6.3	6.0	3.8
Morgan	6,650	6,630	6,860	6,180	6,180	6,490	480	450	380	7.1	6.8	5.5
Nicholas	10,650	10,780	10,560	9,540	9,590	10,120	1,110	1,190	440	10.4	11.1	4.2
Ohio	20,800	20,690	20,990	19,190	19,140	20,120	1,610	1,550	870	7.7	7.5	4.1
Pendleton	3,510	3,540	3,620	3,250	3,300	3,470	270	240	150	7.5	6.8	4.0
Pleasants	3,100	3,060	3,080	2,780	2,780	2,930	320	280	150	10.4	9.2	4.8
Pocahontas	3,360	3,310	3,370	2,910	2,960	3,080	450	350	300	13.3	10.6	8.7
Preston	15,270	15,260	15,280	14,250	14,250	14,730	1,030	1,010	560	6.7	6.6	3.6
Putnam	26,570	26,530	27,080	24,980	24,970	26,260	1,590	1,570	830	6.0	5.9	3.0
Raleigh	32,100	32,090	32,160	29,610	29,640	31,070	2,490	2,450	1,090	7.8	7.6	3.4
Randolph	12,170	12,110	12,420	11,030	11,050	11,710	1,140	1,060	720	9.3	8.7	5.8
Ritchie	4,280	4,310	4,450	3,920	3,950	4,260	360	350	200	8.3	8.2	4.4
Roane	5,380	5,370	5,450	4,640	4,680	5,140	740	690	310	13.8	12.9	5.6
Summers	4,580	4,610	4,600	4,240	4,260	4,400	340	340	200	7.4	7.5	4.4
Taylor	6,850	6,840	6,850	6,390	6,370	6,570	470	470	280	6.8	6.8	4.1
Tucker	2,830	2,820	2,790	2,520	2,520	2,580	310	290	210	11.0	10.4	7.5
Tyler	3,470	3,470	3,540	3,120	3,120	3,350	350	340	190	10.1	9.9	5.3
Upshur	10,300	10,280	10,690	9,410	9,420	10,290	890	850	400	8.6	8.3	3.8
Wayne	17,020	16,920	17,380	15,650	15,630	16,690	1,370	1,290	700	8.0	7.6	4.0
Webster	3,180	3,240	3,220	2,830	2,890	3,070	360	350	150	11.2	10.9	4.6
Wetzel	6,020	5,990	6,490	5,320	5,310	6,120	710	680	370	11.7	11.3	5.7
Wirt	2,430	2,440	2,430	2,180	2,180	2,300	250	260	130	10.4	10.7	5.3
Wood	39,930	39,820	40,380	36,520	36,530	38,590	3,410	3,280	1,800	8.5	8.2	4.4
Wyoming	8,070	8,100	8,100	7,160	7,230	7,810	910	870	290	11.3	10.7	3.6

Statewide 789,900 789,500 799,000

March 2008 benchmark

727,100 728,500 766,800

62,800 61,000 32,200

7.9 7.7 4.0

# Nonfarm Payroll Employment by County

	Total Nonfarm Payroll			Goods-Producing			Service-Providing		
	Nov	Oct	Nov	Nov	Oct	Nov	Nov	Oct	Nov
	2009	2009	2008	2009	2009	2008	2009	2009	2008
Barbour	3,990	3,960	4,090	600	610	610	3,390	3,350	3,480
Berkeley	29,410	29,300	30,050	2,790	2,840	3,410	26,630	26,460	26,650
Boone	9,140	9,150	9,440	3,900	3,920	4,320	5,240	5,240	5,120
Braxton	4,490	4,520	4,510	770	780	810	3,730	3,740	3,700
Brooke	8,720	8,580	9,700	2,180	2,050	2,390	6,540	6,530	7,310
Cabell	55,980	55,460	56,810	7,260	7,200	8,100	48,720	48,260	48,710
Calhoun	1,670	1,620	1,590	440	420	390	1,220	1,200	1,200
Clay	2,010	2,010	2,170	410	410	510	1,600	1,600	1,660
Doddridge	1,330	1,350	1,360	170	190	190	1,160	1,160	1,160
Fayette	13,720	14,060	13,720	1,730	1,980	2,070	11,990	12,080	11,650
Gilmer	2,360	2,350	2,340	500	500	530	1,870	1,860	1,810
Grant	4,140	4,160	4,470	1,210	1,220	1,490	2,930	2,950	2,990
Greenbrier	14,310	14,440	14,170	1,710	1,710	1,700	12,610	12,720	12,470
Hampshire	4,370	4,400	4,410	460	460	450	3,920	3,940	3,960
Hancock	12,480	12,460	12,580	3,100	3,100	3,110	9,380	9,360	9,470
Hardy	5,870	5,960	6,230	2,920	3,010	3,250	2,950	2,950	2,980
Harrison	35,820	35,590	35,050	4,740	4,670	4,560	31,080	30,920	30,490
Jackson	8,300	8,320	9,190	1,830	1,840	2,720	6,470	6,480	6,470
Jefferson	15,170	15,100	14,840	1,740	1,740	1,570	13,430	13,350	13,270
Kanawha	115,150	114,960	116,040	12,200	12,610	12,480	102,950	102,350	103,550
Lewis	6,450	6,640	6,510	1,000	1,020	1,170	5,450	5,620	5,340
Lincoln	3,320	3,330	3,570	750	760	820	2,570	2,570	2,740
Logan	12,170	12,200	12,830	2,570	2,570	2,910	9,610	9,630	9,920
McDowell	6,770	6,690	6,850	1,760	1,760	1,850	5,010	4,930	5,010
Marion	22,250	22,320	22,770	3,810	3,830	4,200	18,440	18,500	18,570
Marshall	11,500	11,510	11,520	2,970	3,010	3,070	8,520	8,500	8,450
Mason	7,290	7,300	7,150	1,090	1,070	870	6,200	6,230	6,290
Mercer	24,230	24,240	24,240	2,420	2,410	2,420	21,820	21,830	21,810
Mineral	8,630	8,590	8,390	2,430	2,430	2,300	6,200	6,170	6,090
Mingo	8,750	8,790	9,790	3,090	3,090	4,010	5,660	5,700	5,780
Monongalia	57,820	57,750	56,890	6,250	6,280	6,390	51,560	51,470	50,490
Monroe	2,580	2,590	2,570	620	620	630	1,970	1,970	1,940
Morgan	3,180	3,180	3,180	430	430	450	2,750	2,750	2,720
Nicholas	9,300	9,290	9,510	2,160	2,150	2,260	7,140	7,140	7,250
Ohio	31,870	31,700	32,520	2,360	2,370	2,520	29,510	29,330	30,000
Pendleton	1,900	1,900	1,900	160	160	180	1,740	1,740	1,720
Pleasants	3,010	3,030	3,200	800	800	840	2,210	2,220	2,370
Pocahontas	3,250	3,260	3,260	480	480	510	2,770	2,790	2,750
Preston	7,340	7,350	8,060	1,220	1,250	1,960	6,130	6,110	6,100
Putnam	21,000	20,900	21,890	4,960	4,970	5,900	16,050	15,930	16,000
Raleigh	33,420	33,370	33,890	5,080	5,010	4,840	28,340	28,360	29,060
Randolph	12,290	12,260	12,570	2,170	2,170	2,250	10,120	10,090	10,320
Ritchie	3,370	3,380	3,500	1,460	1,460	1,530	1,910	1,920	1,970
Roane	3,350	3,370	3,580	560	590	800	2,790	2,780	2,790
Summers	2,770	2,770	2,760	140	140	160	2,620	2,630	2,610
Taylor	2,920	2,910	3,200	190	190	350	2,730	2,730	2,850
Tucker	2,760	2,750	2,700	430	410	440	2,330	2,340	2,260
Tyler	2,650	2,650	2,670	780	780	760	1,880	1,880	1,910
Upshur	8,810	8,750	9,330	2,020	1,990	2,360	6,790	6,760	6,960
Wayne	10,310	10,280	10,440	1,780	1,790	1,950	8,530	8,490	8,490
Webster	2,500	2,530	2,570	700	740	740	1,790	1,790	1,820
Wetzel	4,920	4,900	5,650	260	260	990	4,660	4,630	4,660
Wirt	890	900	920	200	200	210	690	690	710
Wood	42,580	42,630	42,640	6,550	6,500	6,450	36,040	36,130	36,190
Wyoming	5,650	5,710	5,980	1,240	1,280	1,790	4,410	4,440	4,190
<b>Statewide</b>	<b>748,300</b>	<b>747,000</b>	<b>765,800</b>	<b>114,300</b>	<b>114,700</b>	<b>126,100</b>	<b>634,000</b>	<b>632,300</b>	<b>639,700</b>

March 2008 benchmark

## Population and Per Capita Income by County

	<u>2000 Census</u>	<u>Population Estimated July 1, 2008</u>	<u>Change from 2000 to July 1, 2008 Estimate</u>		<u>Per capita Personal Income 2006</u>
			<u>Number</u>	<u>Percent</u>	
Barbour	15,557	15,600	43	0.3	\$22,653
Berkeley	75,905	102,044	26,139	34.4	28,085
Boone	25,535	24,977	-558	-2.2	23,495
Braxton	14,702	14,700	-2	0.0	20,293
Brooke	25,447	23,520	-1,927	-7.6	26,997
Cabell	96,785	94,631	-2,154	-2.2	29,580
Calhoun	7,582	7,212	-370	-4.9	19,753
Clay	10,330	10,075	-255	-2.5	18,110
Doddridge	7,403	7,201	-202	-2.7	20,737
Fayette	47,579	46,341	-1,238	-2.6	23,930
Gilmer	7,160	6,873	-287	-4.0	23,665
Grant	11,299	12,047	748	6.6	25,150
Greenbrier	34,453	34,567	114	0.3	27,465
Hampshire	20,202	22,574	2,372	11.7	22,320
Hancock	32,667	30,008	-2,659	-8.1	27,770
Hardy	12,669	13,591	922	7.3	23,626
Harrison	68,651	68,853	202	0.3	31,333
Jackson	28,000	28,157	157	0.6	24,424
Jefferson	42,190	51,615	9,425	22.3	33,990
Kanawha	200,076	191,018	-9,058	-4.5	36,879
Lewis	16,919	17,281	362	2.1	25,604
Lincoln	22,108	22,386	278	1.3	20,445
Logan	37,710	35,525	-2,185	-5.8	27,302
McDowell	27,329	22,707	-4,622	-16.9	19,898
Marion	56,598	56,496	-102	-0.2	28,738
Marshall	35,519	32,766	-2,753	-7.8	27,458
Mason	25,959	25,678	-281	-1.1	23,825
Mercer	62,980	61,500	-1,480	-2.3	27,231
Mineral	27,078	26,795	-283	-1.0	25,795
Mingo	28,253	26,352	-1,901	-6.7	25,150
Monongalia	81,867	88,221	6,354	7.8	31,742
Monroe	13,194	13,739	545	4.1	22,131
Morgan	14,943	16,325	1,382	9.2	32,510
Nicholas	26,562	26,137	-425	-1.6	24,432
Ohio	47,433	44,106	-3,327	-7.0	34,901
Pendleton	8,196	7,582	-614	-7.5	26,081
Pleasants	7,514	7,150	-364	-4.8	28,215
Pocahontas	9,131	8,472	-659	-7.2	25,926
Preston	29,334	30,285	951	3.2	25,020
Putnam	51,586	55,488	3,902	7.6	31,674
Raleigh	79,220	79,357	137	0.2	28,828
Randolph	28,262	28,264	2	0.0	27,671
Ritchie	10,343	10,308	-35	-0.3	25,207
Roane	15,443	15,169	-274	-1.8	21,163
Summers	14,388	13,017	-1,371	-9.5	20,383
Taylor	16,089	16,158	69	0.4	22,780
Tucker	7,321	6,877	-444	-6.1	25,416
Tyler	9,592	8,841	-751	-7.8	22,061
Upshur	23,404	23,582	178	0.8	23,223
Wayne	42,903	41,082	-1,821	-4.2	23,412
Webster	9,719	9,394	-325	-3.3	20,298
Wetzel	17,693	16,329	-1,364	-7.7	26,039
Wirt	5,873	5,757	-116	-2.0	18,717
Wood	87,982	86,204	-1,778	-2.0	28,900
Wyoming	25,708	23,534	-2,174	-8.5	23,462
West Virginia	1,808,345	1814468	6,123	0.3	\$28,206
United States	281,424,602	304,059,724	22,635,122	8.0	\$36,714

# Metropolitan Statistical Areas

## Charleston Metropolitan Statistical Area

### Demographics:

Area: Boone, Clay, Kanawha,  
Lincoln and Putnam counties in West Virginia  
Total Population July 1, 2008: 303,944  
Population 16 years and Over  
(based on 2000 census): 248,410  
Per capita Personal Income 2006: \$33,010

### Labor Force:

<i>In thousands, not seasonally adjusted</i>	Nov 2009	Oct 2009	Nov 2008
Civilian Labor Force	136.9	136.9	138.2
Total Employment	127.2	127.1	133.7
Total Unemployment	9.7	9.8	4.5
Unemployment Rate	7.1	7.2	3.3

### Nonfarm Payroll Employment:

	Nov 2009	Oct 2009	Nov 2008
Total Nonfarm	150.6	150.3	152.9
Total Private	123.3	123.1	125.4
Goods Producing	22.2	22.6	24.0
Natural Resources, Mining & Construction	16.6	17.0	17.9
Manufacturing	5.6	5.6	6.1
Durable Goods	3.0	3.0	3.2
Nondurable Goods	2.6	2.6	2.9
Service-Providing	128.4	127.7	128.9
Private Service-Providing	101.1	100.5	101.4
Trade, Transportation, & Utilities	28.5	28.2	28.8
Wholesale Trade	5.7	5.7	5.8
Retail Trade	16.2	15.9	16.2
Transportation, Warehousing, & Utilities	6.6	6.6	6.8
Information	2.6	2.6	2.7
Financial Activities	7.9	8.0	8.1
Professional & Business Services	14.6	14.5	15.1
Educational & Health Service	23.5	23.3	22.7
Leisure & Hospitality	12.4	12.3	12.3
Other Services	11.6	11.6	11.7
Government	27.3	27.2	27.5
Federal Government	2.3	2.5	2.6
State Government	11.8	11.7	11.7
Local Government	13.2	13.0	13.2
Labor-Management Dispute Status	0.0	0.0	0.0

## Huntington-Ashland Metropolitan Statistical Area

### Demographics:

Area: Cabell and Wayne counties in West Virginia;  
Lawrence County in Ohio; Greenup and Boyd  
counties in Kentucky  
Total Population July 1, 2008: ..... 284,234  
Population 16 years and Over  
(based on 2000 census): ..... 232,229  
Per capita Personal Income 2006: ..... \$27,145

### Labor Force:

<i>In thousands, not seasonally adjusted</i>	Nov 2009	Oct 2009	Nov 2008
Civilian Labor Force	130.3	130.1	132.6
Total Employment	120.3	119.9	126.3
Total Unemployment	9.9	10.2	6.3
Unemployment Rate	7.6	7.8	4.7

### Nonfarm Payroll Employment:

	Nov 2009	Oct 2009	Nov 2008
Total Nonfarm	117.5	117.2	121.1
Total Private	96.7	96.4	100.4
Goods Producing	15.6	15.8	17.9
Manufacturing	8.5	8.5	9.9
Service-Providing	101.9	101.4	103.2
Private Service-Providing	81.1	80.6	82.5
Retail Trade	15.6	15.3	16.1
Professional & Business Services	9.4	9.4	10.2
Educational & Health Service	24.4	24.3	24.2
Leisure & Hospitality	10.7	10.7	10.8
Government	20.8	20.8	20.7
Federal Government	3.3	3.3	3.1
State Government	5.7	5.7	5.9
Local Government	11.8	11.8	11.7
Labor-Management Dispute Status	0.0	0.0	0.0

## Morgantown Metropolitan Statistical Area

### Demographics:

Area: Monongalia and Preston counties in West Virginia  
 Total Population July 1, 2008: ..... 118,506  
 Population 16 years and Over  
 (based on 2000 census): ..... 92,050  
 Per capita Personal Income 2006: ..... \$30,011

### Labor Force Data:

<i>In thousands, not seasonally adjusted</i>	Nov 2009	Oct 2009	Nov 2008
Civilian Labor Force	63.4	63.6	64.0
Total Employment	60.3	60.3	62.3
Total Unemployment	3.2	3.3	1.7
Unemployment Rate	5.0	5.2	2.7

### Nonfarm Payroll Employment:

<i>*In Thousands</i>	Nov 2009	Oct 2009	Nov 2008
Total Nonfarm	65.1	65.0	64.9
Total Private	46.4	46.4	46.9
Goods Producing	7.5	7.5	8.4
Manufacturing	3.8	3.8	4.1
Service-Providing	57.6	57.5	56.5
Private Service-Providing	38.9	38.9	38.5
Retail Trade	6.7	6.7	6.9
Professional & Business Services	4.8	4.8	4.6
Educational & Health Service	12.8	12.8	12.6
Leisure & Hospitality	6.9	6.9	6.8
Government	18.7	18.6	18.0
Federal Government	1.9	1.9	1.8
State Government	12.5	12.5	11.9
Local Government	4.3	4.2	4.3
Labor-Management Dispute Status	0.0	0.0	0.0

## Parkersburg-Marietta Metropolitan Statistical Area

### Demographics:

Area: Pleasants, Wirt, Wood counties in West Virginia  
 Washington County in Ohio  
 Total Population July 1, 2008: ..... 160,678  
 Population 16 years and Over  
 (based on 2000 census): ..... 130,971  
 Per capita Personal Income 2006: ..... \$28,285

### Labor Force Data:

<i>In thousands, not seasonally adjusted</i>	Nov 2009	Oct 2009	Nov 2008
Civilian Labor Force	78.7	78.6	79.1
Total Employment	71.6	71.7	75.2
Total Unemployment	7.0	6.9	3.9
Unemployment Rate	9.0	8.8	5.0

### Nonfarm Payroll Employment:

<i>*In Thousands</i>	Nov 2009	Oct 2009	Nov 2008
Total Nonfarm	72.2	72.1	73.6
Total Private	61.1	61.0	62.3
Goods Producing	12.9	12.9	14.0
Manufacturing	7.8	7.8	8.4
Service-Providing	59.3	59.2	59.6
Private Service-Providing	48.2	48.1	48.3
Educational and Health Service	12.9	12.8	12.7
Government	11.1	11.1	11.3
Federal Government	2.5	2.5	2.5
State Government	1.7	1.7	1.7
Local Government	6.9	6.9	7.1
Labor-Management Dispute Status	0.0	0.0	0.0

## Wheeling Metropolitan Statistical Area

### Demographics:

Area: Marshall and Ohio counties in West Virginia  
 Belmont County in Ohio  
 Total Population July 1, 2008: ..... 144,847  
 Population 16 years and Over  
 (based on 2000 census): ..... 123,919  
 Per capita Personal Income 2006: ..... \$29,253

### Labor Force Data:

<i>In thousands, not seasonally adjusted</i>	Nov 2009	Oct 2009	Nov 2008
Civilian Labor Force	69.1	68.8	69.0
Total Employment	62.9	62.8	65.4
Total Unemployment	6.2	6.0	3.6
Unemployment Rate	9.0	8.8	5.2

### Nonfarm Payroll Employment:

<i>*In Thousands</i>	Nov 2009	Oct 2009	Nov 2008
Total Nonfarm	68.4	68.1	69.0
Total Private	57.6	57.4	58.3
Goods Producing	8.5	8.6	9.3
Manufacturing	3.8	3.9	4.1
Service-Providing	59.9	59.5	59.7
Private Service-Providing	49.1	48.8	49.0
Educational & Health Service	13.3	13.3	13.4
Government	10.8	10.7	10.7
Federal Government	0.7	0.7	0.7
State Government	2.5	2.4	2.4
Local Government	7.6	7.6	7.6
Labor-Management Dispute Status	0.0	0.0	0.0

# Statistical Areas

<b>Micropolitan Statistical Areas</b>	<i>Prelim Nov 2009</i>	<i>Rev Oct 2009</i>	<i>Rev Nov 2008</i>
<b>Beckley-Oak Hill CSA</b>			
Civilian Labor Force	50.1	50.3	49.9
Total Employment	45.9	46.2	48.1
Total Unemployment	4.2	4.0	1.8
Unemployment Rate	8.3	8.0	3.7
<b>Beckley MCSA</b> <i>Raleigh County, WV</i>			
Civilian Labor Force	32.1	32.1	32.2
Total Employment	29.6	29.6	31.1
Total Unemployment	2.5	2.5	1.1
Unemployment Rate	7.8	7.6	3.4
<b>Oak Hill MCSA</b> <i>Fayette County, WV</i>			
Civilian Labor Force	18.0	18.2	17.7
Total Employment	16.3	16.6	17.0
Total Unemployment	1.7	1.6	0.8
Unemployment Rate	9.4	8.7	4.2
<b>Bluefield MCSA</b> <i>Mercer County, WV and Tazewell County, VA</i>			
Civilian Labor Force	46.1	46.2	45.8
Total Employment	43.0	43.0	44.0
Total Unemployment	3.1	3.2	1.8
Unemployment Rate	6.8	7.0	3.8
<b>Fairmont-Clarksburg CSA</b>			
Civilian Labor Force	66.1	66.0	66.1
Total Employment	61.5	61.5	63.8
Total Unemployment	4.5	4.5	2.3
Unemployment Rate	6.9	6.8	3.5
<b>Fairmont MCSA</b> <i>Marion County, WV</i>			
Civilian Labor Force	25.7	25.8	26.1
Total Employment	24.1	24.1	25.3
Total Unemployment	1.7	1.7	0.8
Unemployment Rate	6.4	6.4	3.1
<b>Clarksburg MCSA</b> <i>Doddridge, Harrison and Taylor Counties, WV</i>			
Civilian Labor Force	40.3	40.2	40.0
Total Employment	37.5	37.4	38.5
Total Unemployment	2.9	2.8	1.5
Unemployment Rate	7.1	7.0	3.7
<b>Point Pleasant MCSA</b> <i>Mason County, WV and Gallia County, OH</i>			
Civilian Labor Force	24.1	24.2	23.8
Total Employment	21.6	21.7	22.2
Total Unemployment	2.5	2.5	1.5
Unemployment Rate	10.5	10.3	6.5

The areas listed are the names of the labor market areas composed of the indicated counties.

Data are for the labor market areas, not the cities proper.

Labor market areas have been redefined in accordance with the 2000 Census data.

Data in thousands.

March 2008 benchmark.

MSA Metropolitan Statistical Area  
 CSA Combined Micropolitan Statistical Area  
 MCSA Micropolitan Statistical Area

<b>Metropolitan Statistical Areas that include West Virginia Counties</b>	<i>Prelim Nov 2009</i>	<i>Rev Oct 2009</i>	<i>Rev Nov 2008</i>
<b>Steubenville-Weirton MSA</b>			
Civilian Labor Force	58.3	58.3	58.7
Total Employment	51.1	51.2	54.6
Total Unemployment	7.3	7.2	4.1
Unemployment Rate	12.5	12.3	7.0
<b>Cumberland MSA</b>			
Civilian Labor Force	48.6	48.8	48.9
Total Employment	44.7	45.1	46.1
Total Unemployment	3.9	3.7	2.8
Unemployment Rate	8.1	7.6	5.6
<b>Washington DC-Alexandria-Arlington</b>			
Civilian Labor Force	3,013.4	3,005.5	3,020.2
Total Employment	2,830.1	2,819.5	2,889.0
Total Unemployment	183.3	186.0	131.1
Unemployment Rate	6.1	6.2	4.3
<b>Hagerstown-Martinsburg MSA</b>			
Civilian Labor Force	118.0	117.6	119.3
Total Employment	107.5	107.3	112.0
Total Unemployment	10.5	10.3	7.3
Unemployment Rate	8.9	8.8	6.1
<b>Winchester MSA</b>			
Civilian Labor Force	63.3	63.2	64.2
Total Employment	58.5	58.7	6.1
Total Unemployment	4.8	4.6	3.4
Unemployment Rate	7.6	7.2	5.2

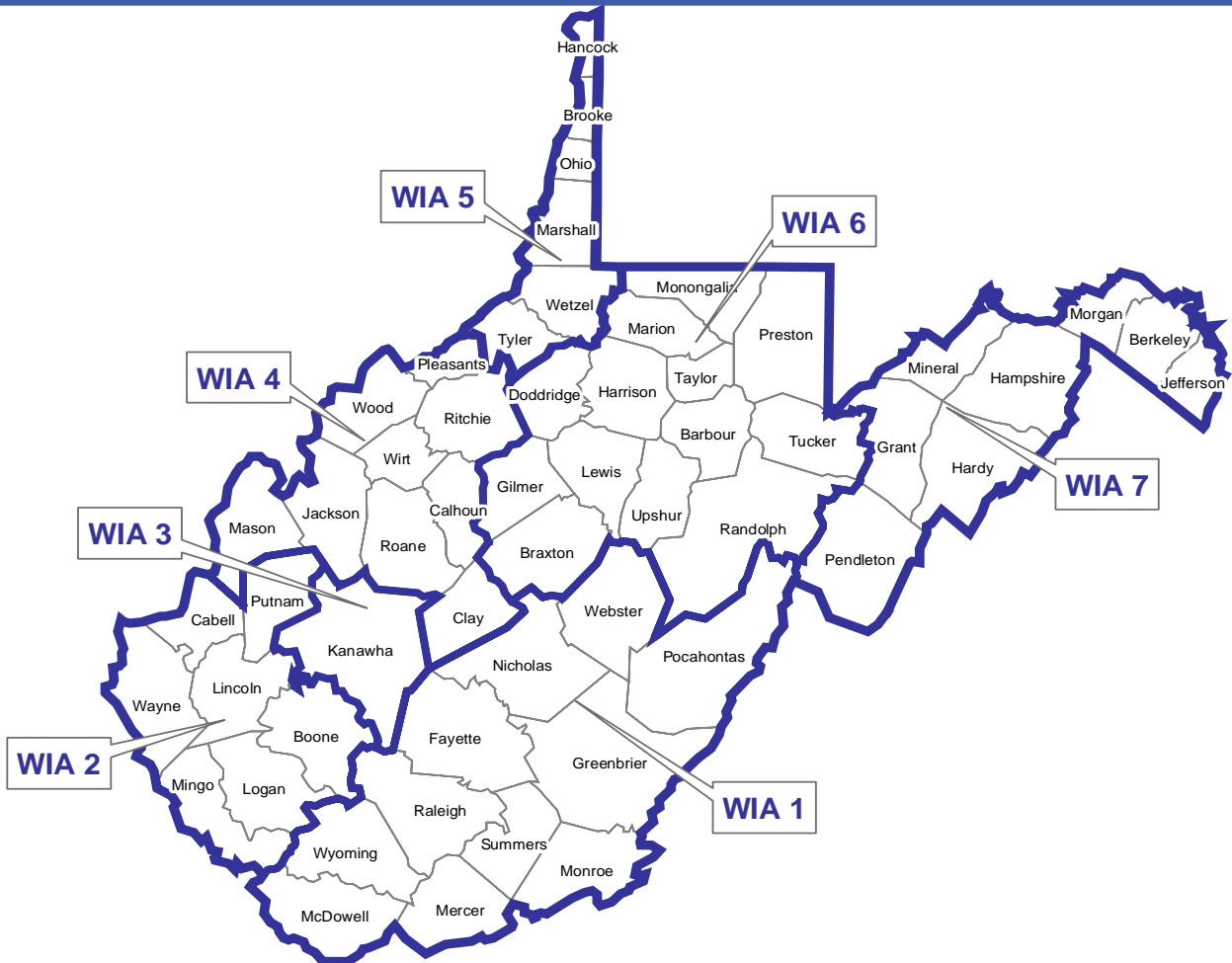
Includes Brooke and Hancock Counties, WV and Jefferson County, OH. Data courtesy of Ohio Bureau of Employment Services.

Includes Mineral County, WV and Allegany County, MD. Data courtesy of Maryland Department of Economic & Employment Development.

Includes Washington, DC, portions of Virginia and Maryland, and Jefferson County, WV. Data courtesy of District of Columbia Department of Employment Services.

Includes Morgan and Berkeley Counties, WV and Washington County, MD. Data courtesy of Maryland Department of Economic & Employment Development.

Includes Hampshire County, WV and Frederick County and Winchester City, VA. Data courtesy of Virginia Employment Commission.



## Workforce Investment Area 1

### November 2009

#### Over the Month:

- Total nonfarm payroll employment down 400
- Goods-producing sector down 300
- Service-providing sector down 300
- Total unemployment up 310
- Unemployment rate up three-tenths of a percentage points to 8.6 percent

#### Over the Year:

- Total nonfarm payroll employment down 1,000
- Goods-producing sector down 1,000
- Service-providing sector down 200
- Total unemployment up 6,010
- Unemployment rate up four and six-tenths percentage points from 4.0 percent

### Labor Force Data

	Nov 2009	Oct 2009	Nov 2008
Civilian Labor Force	132.4	132.9	132.3
Employment	121.1	121.8	127.0
Unemployment	11.4	11.0	5.3
Unemployment Rate	8.6	8.3	4.0

### Nonfarm Payroll Employment

	Nov 2009	Oct 2009	Nov 2008
Total Nonfarm Payroll	118.5	118.9	119.5
Total Private	93.2	93.7	95.0
Goods-Producing	18.0	18.3	19.0
Mining & Logging	7.2	7.5	8.1
Construction	5.0	5.0	4.8
Manufacturing	5.9	5.8	6.1
Service-Providing	100.4	100.7	100.6
Private Service-Providing	75.2	75.5	76.1
Trade, Transportation, & Utilities	23.2	23.1	23.7
Wholesale Trade	3.3	3.3	3.6
Retail Trade	16.1	15.9	16.3
Transportation, Warehousing, & Utilities	3.8	3.8	3.8
Information	1.3	1.3	1.3
Financial Activities	3.8	3.8	3.9
Professional & Business Services	6.6	6.7	7.0
Educational & Health Services	17.9	18.0	17.5
Leisure & Hospitality	12.4	12.5	12.5
Other Services	10.0	10.2	10.2
Government	25.3	25.2	24.5
Federal	3.1	3.1	3.0
State	6.5	6.4	6.2
Local	15.7	15.7	15.3
Labor-Management Dispute Status	0.0	0.0	0.0

*In thousands, not seasonally adjusted. Numbers may not add due to rounding.*

## Workforce Investment Area 2

### November 2009

#### Over the Month:

- Total nonfarm payroll employment up 600
- Goods-producing sector unchanged
- Service-providing sector up 600
- Total unemployment up 160
- Unemployment rate up one-tenth of a percentage point to 7.6 percent

#### Over the Year:

- Total nonfarm payroll employment down 4,100
- Goods-producing sector down 3,700
- Service-providing sector down 400
- Total unemployment up 5,070
- Unemployment rate up four and one-tenth percentage points from 3.5 percent

	Nov 2009	Oct 2009	Nov 2008
<b>Labor Force Data</b>			
Civilian Labor Force	125.8	125.6	128.6
Employment	116.2	116.2	124.1
Unemployment	9.6	9.4	4.5
Unemployment Rate	7.6	7.5	3.5
<b>Nonfarm Payroll Employment</b>			
Total Nonfarm Payroll	120.7	120.1	124.8
Total Private	100.0	99.5	103.9
Goods-Producing	24.3	24.3	28.0
Mining & Logging	9.0	9.0	10.1
Construction	6.8	6.8	8.9
Manufacturing	8.5	8.5	9.0
Service-Providing	96.4	95.8	96.8
Private Service-Providing	75.7	75.3	75.9
Trade, Transportation, & Utilities	24.6	24.2	24.4
Wholesale Trade	4.6	4.6	4.7
Retail Trade	14.5	14.0	14.1
Transportation, Warehousing, & Utilities	5.5	5.5	5.6
Information	1.4	1.4	1.5
Financial Activities	3.7	3.7	3.9
Professional & Business Services	10.2	10.0	10.6
Educational & Health Services	18.1	18.1	17.6
Leisure & Hospitality	9.8	9.8	10.2
Other Services	8.0	7.9	7.7
Government	20.6	20.6	20.9
Federal	3.1	3.1	2.9
State	5.5	5.6	6.0
Local	12.1	11.9	12.0
Labor-Management Dispute Status	0.0	0.0	0.0

## Workforce Investment Area 3

### November 2009

#### Over the Month:

- Total nonfarm payroll employment up 200
- Goods-producing sector down 400
- Service-providing sector up 500
- Total unemployment up 30
- Unemployment rate unchanged at 6.8 percent

#### Over the Year:

- Total nonfarm payroll employment down 800
- Goods-producing sector down 300
- Service-providing sector down 700
- Total unemployment up 3,200
- Unemployment rate up three and six-tenths percentage points from 3.2 percent

	Nov 2009	Oct 2009	Nov 2008
<b>Labor Force Data</b>			
Civilian Labor Force	89.6	89.5	90.7
Employment	83.5	83.4	87.7
Unemployment	6.1	6.1	2.9
Unemployment Rate	6.8	6.8	3.2
<b>Nonfarm Payroll Employment</b>			
Total Nonfarm Payroll	115.2	115.0	116.0
Total Private	93.3	93.1	94.1
Goods-Producing	12.2	12.6	12.5
Mining & Logging	2.5	2.5	3.3
Construction	6.2	6.6	5.3
Manufacturing	3.5	3.5	3.9
Service-Providing	102.9	102.4	103.6
Private Service-Providing	81.1	80.4	81.6
Trade, Transportation, & Utilities	20.6	20.3	21.0
Wholesale Trade	3.9	3.9	4.0
Retail Trade	12.6	12.3	12.7
Transportation, Warehousing, & Utilities	4.1	4.1	4.3
Information	2.2	2.2	2.2
Financial Activities	6.7	6.7	6.9
Professional & Business Services	11.9	11.8	12.4
Educational & Health Services	20.5	20.3	19.8
Leisure & Hospitality	10.1	10.0	10.1
Other Services	9.1	9.1	9.2
Government	21.9	21.9	22.0
Federal	1.9	2.2	2.3
State	11.2	11.1	11.1
Local	8.7	8.6	8.6
Labor-Management Dispute Status	0.0	0.0	0.0

*In thousands, not seasonally adjusted. Numbers may not add due to rounding.*

## Workforce Investment Area 4

### November 2009

#### Over the Month:

- Total nonfarm payroll unchanged
- Goods-producing sector unchanged
- Service-providing sector down 200
- Total unemployment up 320
- Unemployment rate up four-tenths of a percentage point to 10.3 percent

#### Over the Year:

- Total nonfarm payroll employment down 1,500
- Goods-producing sector down 1,000
- Service-providing sector down 500
- Total unemployment up 4,410
- Unemployment rate up five and four-tenths percentage points from 4.9 percent

	Nov 2009	Oct 2009	Nov 2008
<b>Labor Force Data</b>			
Civilian Labor Force	82.9	82.8	93.5
Employment	74.4	74.6	79.3
Unemployment	8.5	8.2	4.1
Unemployment Rate	10.3	9.9	4.9
<b>Nonfarm Payroll Employment</b>			
Total Nonfarm Payroll	72.5	72.5	74.0
Total Private	59.1	59.1	60.4
Goods-Producing	13.3	13.3	14.3
Mining & Logging	1.7	1.7	1.9
Construction	4.5	4.5	4.1
Manufacturing	7.1	7.1	8.3
Service-Providing	59.1	59.3	59.6
Private Service-Providing	45.7	45.8	46.1
Trade, Transportation, & Utilities	15.4	15.2	15.4
Wholesale Trade	1.5	1.5	1.6
Retail Trade	10.4	10.2	10.3
Transportation, Warehousing, & Utilities	3.5	3.5	3.5
Information	1.1	1.1	1.1
Financial Activities	3.0	3.0	3.1
Professional & Business Services	3.7	3.8	3.7
Educational & Health Services	10.8	10.9	10.7
Leisure & Hospitality	7.0	7.0	6.7
Other Services	4.8	4.9	5.4
Government	13.4	13.4	13.6
Federal	2.5	2.5	2.6
State	2.5	2.4	2.6
Local	8.4	8.4	8.4
Labor-Management Dispute Status	0.0	0.0	0.0

## Workforce Investment Area 5

### November 2009

#### Over the Month:

- Total nonfarm payroll employment up 300
- Goods-producing up 100
- Service-providing sector up 300
- Total unemployment up 350
- Unemployment rate up one-half of a percentage point to 9.6 percent

#### Over the Year:

- Total nonfarm payroll employment down 2,500
- Goods-producing sector down 1,100
- Service-providing sector down 1,300
- Total unemployment up 3,030
- Unemployment rate up four and five-tenths percentage points from 5.1 percent

	Nov 2009	Oct 2009	Nov 2008
<b>Labor Force Data</b>			
Civilian Labor Force	70.0	69.6	71.4
Employment	63.3	63.2	67.7
Unemployment	6.7	6.4	3.7
Unemployment Rate	9.6	9.1	5.1
<b>Nonfarm Payroll Employment</b>			
Total Nonfarm Payroll	72.1	71.8	74.6
Total Private	61.1	60.9	63.9
Goods-Producing	11.7	11.6	12.8
Mining & Logging	1.3	1.3	1.4
Construction	1.9	2.0	2.8
Manufacturing	8.4	8.2	8.7
Service-Providing	60.5	60.2	61.8
Private Service-Providing	49.5	49.4	51.0
Trade, Transportation, & Utilities	11.7	11.6	12.0
Wholesale Trade	2.3	2.3	2.7
Retail Trade	7.6	7.5	7.5
Transportation, Warehousing, & Utilities	1.8	1.8	1.8
Information	0.6	0.6	0.6
Financial Activities	2.8	2.8	2.8
Professional & Business Services	5.5	5.5	5.6
Educational & Health Services	12.7	12.7	13.5
Leisure & Hospitality	9.3	9.3	9.7
Other Services	6.9	6.9	6.9
Government	11.0	10.9	10.8
Federal	0.7	0.7	0.7
State	2.1	2.0	2.1
Local	8.2	8.2	8.0
Labor-Management Dispute Status	0.0	0.0	0.0

*In thousands, not seasonally adjusted. Numbers may not add due to rounding.*

## Workforce Investment Area 6

### November 2009

#### Over the Month:

- Total nonfarm payroll employment up 100
- Goods-producing sector unchanged
- Service-providing sector up 200
- Total unemployment down 80
- Unemployment rate unchanged at 6.7 percent

#### Over the Year:

- Total nonfarm payroll employment down 800
- Goods-producing sector down 1,900
- Service-providing sector up 1,300
- Total unemployment up 5,680
- Unemployment rate up three and two-tenths percentage points from 3.5 percent

Labor Force Data	Nov 2009	Oct 2009	Nov 2008
Civilian Labor Force	177.5	177.7	178.9
Employment	165.6	165.8	172.6
Unemployment	11.9	11.9	6.3
Unemployment Rate	6.7	6.7	3.5
Nonfarm Payroll Employment			
Total Nonfarm Payroll	168.6	168.5	169.4
Total Private	126.4	126.5	128.3
Goods-Producing	23.9	23.9	25.8
Mining & Logging	5.0	5.0	6.1
Construction	8.4	8.5	8.5
Manufacturing	10.4	10.4	11.3
Service-Providing	144.8	144.6	143.5
Private Service-Providing	102.5	102.6	102.5
Trade, Transportation, & Utilities	29.3	29.2	29.3
Wholesale Trade	3.9	3.9	4.0
Retail Trade	19.4	19.2	19.8
Transportation, Warehousing, & Utilities	6.0	6.0	5.5
Information	1.9	1.9	1.9
Financial Activities	4.8	4.8	4.9
Professional & Business Services	11.5	11.6	11.5
Educational & Health Services	28.2	28.1	28.1
Leisure & Hospitality	15.8	15.9	15.7
Other Services	11.1	11.1	11.1
Government	42.2	42.0	41.0
Federal	7.1	7.1	6.8
State	18.4	18.4	17.6
Local	16.7	16.5	16.6
Labor-Management Dispute Status	0.0	0.0	0.0

## Workforce Investment Area 7

### November 2009

#### Over the Month:

- Total nonfarm payroll employment up 100
- Goods-producing sector down 200
- Service-providing sector up 200
- Total unemployment up 480
- Unemployment rate up one-half of a percentage point to 7.7 percent

#### Over the Year:

- Total nonfarm payroll employment down 800
- Goods-producing sector down 1000
- Service-providing sector up 100
- Total unemployment up 3,180
- Unemployment rate up three percentage points from 4.7 percent

Labor Force Data	Nov 2009	Oct 2009	Nov 2008
Civilian Labor Force	111.6	111.5	113.7
Employment	103.1	103.4	108.4
Unemployment	8.6	8.1	5.4
Unemployment Rate	7.7	7.2	4.7
Nonfarm Payroll Employment			
Total Nonfarm Payroll	72.7	72.6	73.5
Total Private	53.6	53.6	54.8
Goods-Producing	12.1	12.3	13.1
Mining & Logging	0.7	0.7	0.7
Construction	3.1	3.2	3.8
Manufacturing	8.4	8.4	8.6
Service-Providing	60.5	60.3	60.4
Private Service-Providing	41.5	41.3	41.7
Trade, Transportation, & Utilities	12.4	12.3	12.6
Wholesale Trade	1.6	1.6	1.6
Retail Trade	8.6	8.5	8.7
Transportation, Warehousing, & Utilities	2.2	2.2	2.3
Information	1.9	1.9	2.1
Financial Activities	2.5	2.5	2.5
Professional & Business Services	4.3	4.3	4.2
Educational & Health Services	8.2	8.2	8.1
Leisure & Hospitality	7.9	7.9	8.1
Other Services	4.2	4.2	4.2
Government	19.1	19.0	18.7
Federal	5.0	5.0	4.9
State	3.5	3.5	3.3
Local	10.6	10.5	10.5
Labor-Management Dispute Status	0.0	0.0	0.0

*In thousands, Not Seasonally Adjusted. Numbers may not add due to rounding.*

# Occupational Profile

**Registered Nurses** are projected to have a strong job outlook through 2016. Expected job openings will average approximately 627 per year, 354 of which will come from new job growth. The average annual growth rate is projected to be 1.96% per year, nearly four times the growth rate for all occupations combined (.61%). Education and training for Registered Nurses typically requires an associate's degree or higher.

"Employers in some parts of the country and in certain employment settings report difficulty in attracting and retaining an adequate number of RNs, primarily because of an aging RN workforce and a lack of younger workers to fill positions. Enrollments in nursing programs at all levels have increased more rapidly in the past few years as students seek jobs with stable employment. However, many qualified applicants are being turned away because of a shortage of nursing faculty. The need for nursing faculty will only increase as many instructors near retirement. Many employers also are relying on foreign-educated nurses to fill vacant positions.

Generally, RNs with at least a bachelor's degree will have better job prospects than those without a bachelor's. In addition, all four advanced practice specialties-clinical nurse specialists, nurse practitioners, nurse-midwives, and nurse anesthetists-will be in high demand, particularly in medically underserved areas such as inner cities and rural areas. Relative to physicians, these RNs increasingly serve as lower-cost primary care providers."

<sup>1</sup>Occupational Outlook Handbook, US Bureau of Labor Statistics

**Table 1 - Growth**

Area	Annual Openings	Growth Rate
WIA 1	94	1.89%
WIA 2	102	1.90%
WIA 3	145	2.70%
WIA 4	47	1.09%
WIA 5	61	2.12%
WIA 6	146	1.99%
WIA 7	49	1.76%

**Table 2 - Wage History**

	This Occupation	*	Compared to all Occupations	*	Difference
2009 Q2	\$24.53	0.8%	\$12.82	0.6%	\$11.71
2008	\$24.33	3.0%	\$12.74	2.6%	\$11.59
2007	\$23.61	3.4%	\$12.41	3.2%	\$11.20
2006	\$22.82	4.0%	\$12.02	3.2%	\$10.80
2005	\$21.94	2.8%	\$11.64	2.4%	\$10.30
2004	\$21.33	3.1%	\$11.36	2.6%	\$9.97
2003	\$20.67	3.0%	\$11.07	3.0%	\$9.60
2002	\$20.05	2.3%	\$10.74	2.5%	\$9.31
2001	\$19.59		\$10.47		\$9.12

\* %Change

**Table 3 - Top Employing Industries**

Industry	Employment	%
Education & Health Services	15,270	90.3%
Public Administration	1,290	7.6%
Professional & Business Services	250	1.4%
Other Services	60	0.3%
Financial Activities	20	0.1%
Manufacturing	10	0.0%
Trade, Transportation, and Utilities	10	0.0%

**Table 4 - Best Paying Industries**

Industry	Employment	Median Wage
Trade, Transportation, & Utilities	110	\$13.65
Information	10	\$13.10
Manufacturing	10	\$12.33
Financial Activities	170	\$12.25
Education & Health Services	520	\$12.12
Professional & Business Services	1,190	\$12.05
Other Services		\$11.19
Public Administration		\$9.24

**Table 5 - Top Areas by This Occupation**

Highest Employment			Highest Pay		
Area	Median Wage	Employment	Area	Median Wage	Employment
WIA 6	\$24.97	4,020	WIA 7	\$28.00	1,670
WIA 3	\$25.57	3,170	WIA 3	\$25.57	3,170
WIA 2	\$25.04	2,680	WIA 2	\$25.04	2,680
WIA 1	\$23.62	2,490	WIA 6	\$24.97	4,020
WIA 5	\$21.94	1,830	WIA 1	\$23.62	2,490
WIA 7	\$28.00	1,670	WIA 4	\$22.80	1,530
WIA 4	\$22.80	1,530	WIA 5	\$21.94	1,830

## State Economic Indicators

### West Virginia

#### Trends in the Labor Market

	Nov 2009	Oct 2009	Nov 2008
Average Weekly Hours in Manufacturing, Unadjusted	39.3	39.6	42.0
Total Production Worker Hours in Manufacturing (000), Weekly, Unadjusted	1,564	1,568	1,877
Average Weekly Earnings in Manufacturing, Unadjusted	\$721.94	\$729.83	\$805.56
Coal Production (tons)	11,655,613	12,376,547	12,544,830

#### Unemployment Compensation Selected Claims Activities

	Nov 2009	Oct 2009	Nov 2008
Initial Claims	8,755	9,337	7,025
Weeks Claimed	117,760	103,434	59,504
Benefits Paid	\$25,656,162	\$23,252,823	\$10,923,263
Weeks Compensated	99,388	87,413	47,408
Average Weekly Payment	\$258.14	\$266.01	\$230.41
Trust Fund Balance	\$148,264,941	\$151,694,355	\$250,746,956
Insured Unemployment Rate			
Unadjusted	3.6	3.2	2.0
Seasonally Adjusted	4.4	4.4	2.4

## Labor Force Data by States

State*	Nov 2009		Oct 2009		State*	Nov 2009		Oct 2009	
	Rate	Rank	Rate	Rank		Rate	Rank	Rate	Rank
Alabama	10.5	13	10.9	11	Montana	6.4	45	6.4	48
Alaska	8.7	24	8.7	27	Nebraska	4.5	50	4.9	50
Arizona	8.9	22	9.3	19	Nevada	12.3	3	12.9	2
Arkansas	7.4	34	7.6	34	New Hampshire	6.7	41	6.8	42
California	12.3	3	12.5	4	New Jersey	9.7	16	9.7	18
Colorado	6.9	40	7.0	41	New Mexico	7.8	33	7.8	33
Connecticut	8.2	29	8.8	26	New York	8.6	25	9.0	22
Delaware	8.5	26	8.6	28	North Carolina	10.8	10	10.9	11
District of Columbia	11.8	6	11.9	6	North Dakota	4.1	51	4.2	51
Florida	11.5	7	11.3	7	Ohio	10.6	11	10.5	13
Georgia	10.2	15	10.1	15	Oklahoma	7.0	38	7.3	38
Hawaii	7.0	38	7.3	38	Oregon	11.1	8	11.2	9
Idaho	9.1	21	9.0	22	Pennsylvania	8.5	26	8.9	24
Illinois	10.9	9	11.0	10	Rhode Island	12.7	2	12.9	2
Indiana	9.6	17	9.8	16	South Carolina	12.3	3	12.0	5
Iowa	6.7	41	6.6	44	South Dakota	5.0	49	5.0	49
Kansas	6.3	47	6.7	43	Tennessee	10.3	14	10.5	13
Kentucky	10.6	11	11.3	7	Texas	8.0	31	8.3	31
Louisiana	6.7	41	7.4	36	Utah	6.3	47	6.5	46
Maine	8.0	31	8.2	32	Vermont	6.4	45	6.5	46
Maryland	7.4	34	7.3	38	Virginia	6.6	44	6.6	44
Massachusetts	8.8	23	8.9	24	Washington	9.2	20	9.3	19
Michigan	14.7	1	15.1	1	<b>West Virginia</b>	<b>8.4</b>	<b>28</b>	<b>8.5</b>	<b>29</b>
Minnesota	7.4	34	7.6	34	Wisconsin	8.2	29	8.4	30
Mississippi	9.6	17	9.8	16	Wyoming	7.2	37	7.4	36
Missouri	9.5	19	9.3	19	United States	10.0	xx	10.2	xx

Seasonally adjusted data. In thousands.

\*Includes District of Columbia

## Selected National Data

	Nov 2009	Oct 2009	Nov 2008
<b>United States</b>			
Civilian Unemployment Rate			
Not Seasonally Adjusted	9.1	9.5	6.5
Seasonally Adjusted	10.0	10.2	6.8
Consumer Price Index, All Urban Consumers			
Unadjusted			
1982-84 Base	216.3	216.2	212.4
1967 Base	648.0	647.6	636.3
Producer Price Index, Finished Goods			
Unadjusted, 1982 Base	176.2	174.1	172.1
Average Hours and Earnings of Private Sector Production & Nonsupervisory Workers, Unadjusted			
Average Weekly Earnings	\$630.14	\$619.90	\$620.08
Average Weekly Hours	33.5	33.1	33.7
Average Hourly Earnings	\$18.81	\$18.73	\$18.40

## West Virginia Economic Summary

is prepared by  
WorkForce West Virginia,  
Research, Information and Analysis Division  
112 California Ave.  
Charleston, WV 25305

**Joe Manchin III**  
Governor

**Russell Fry**  
Acting Executive Director  
WorkForce West Virginia

**Ben Parker**  
Director  
Research, Information & Analysis

For subscription or  
additional information,  
call 304.558.2660  
fax 304.558.1343  
lmi@workforcewv.org

The Office of Research, Information, and Analysis supports an extensive website which contains detailed wage data, occupational information, current and historical labor market data, and more. It is updated regularly and is the quickest way to obtain information or to find specific details.

Visit the WORKFORCE West Virginia Labor Market Information website

[www.workforcewv.org/lmi](http://www.workforcewv.org/lmi)

*West Virginia*  
*Labor market info*  
Visual Information Tools for Businesses, Individuals,  
Providers and Researchers [www.wvlmi.com](http://www.wvlmi.com)

---

*This publication is produced under an annual labor market information grant from the Employment and Training Administration, U.S. Department of Labor; employment and unemployment data are derived from core statistical programs funded under annual cooperative agreements with the Bureau of Labor Statistics, U.S. Department of Labor. The material contained in this publication is in the public domain and may be reproduced without special permission.*

---

**WorkForce West Virginia**  
**Research, Information and Analysis**  
**112 California Avenue**  
**Charleston, WV 25305-0112**

### RETURN SERVICE REQUESTED

- If any part of your address has changed, please mark corrections on this page and return it to the above address.
- If you do not wish to continue receiving this publication, please check here , and return this cover to the above address or contact us at lmi@workforcewv.org